

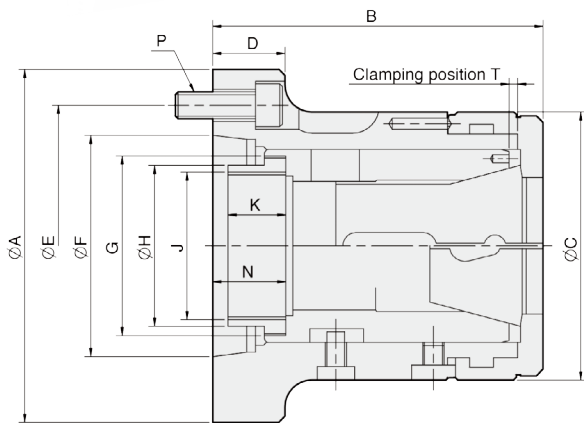


CRA

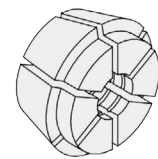
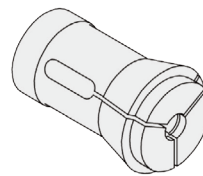
Collet chuck for short taper mount

1. Collet chucks with bayonet catch are mainly used for chucking bar work on NC / CNC lathes.
2. The bar can be fed in through the chuck.
3. Profiles can also be chucked with the appropriate collets.

Product schematic



Collet Drawings



- Spring Collet -

- Multi-Bore Collet -

UNIT : mm

SPEC Model	Matching Spindle	Bar Capacity (mm)	Sleeve Stroke (mm)	Max. Push Force kN(kgf)	Max. Gripping Force kN(kgf)	Max. Speed (r.p.m.)	Weight (kg)
CR26A4	A2-4	26	5	20(2039)	44(4486)	7000	4,5
CR30A4	A2-4	30	5	20(2039)	44(4486)	7000	4,1
CR42A5	A2-5	42	7	25(2549)	55(5608)	6000	6,2
CR42A6	A2-6	42	7	25(2549)	55(5608)	6000	8,2
CR52A6	A2-6	52	7	30(3059)	65(6628)	5000	12,2
CR60A6	A2-6	60	7	30(3059)	65(6628)	5000	13
CR65A6	A2-6	67	7	30(3059)	65(6628)	5000	10,6
CR80A8	A2-8	80	7	35(3568)	73(7443)	4000	21

Capacities Chuck	MULTIBORE	SPRING COLLET
NO.	Cat.No. / ○ / ○ / □	Cat.No. / ○ / ○ / □
CR26	M-667 / 26 / 22 / 18	161E/8744 / 26 / 22 / 18
CR30	M-669 / 30 / 26 / 21	163E/4249 / 30 / 26 / 21
CR42	M-673 / 42 / 36 / 30	173E/4728 / 42 / 36 / 30
CR52	— / — / — / —	177E / 52 / 45 / 36
CR60	M-677 / 60 / 52 / 42	185E/4291 / 60 / 52 / 42
CR65	— / — / — / —	SAD-65 / 67 / 58 / 47
CR80	J-660 / 80 / 69 / 56	193E/H-47 / 80 / 69 / 56

DIM Model	A	B	C	D	E	F	G	H	J _{max.}	K	N	P	T
CR26A4	112	103.5	85	30	82.55	63.513	M50xP1.5	45	M40xP1.5	15	22.2	3-M10	2.3
CR30A4	112	103.5	85	30	82.55	63.513	M50xP1.5	45	M40xP1.5	15	22.2	3-M10	2.3
CR42A5	135	127	100	27	104.78	82.563	M66xP1.5	60	M55xP2.0	25	30.9	4-M10	3.1
CR42A6	170	127	100	32	133.35	106.375	M66xP1.5	66	M60xP2.0	22	30.9	4-M12	3.1
CR52A6	170	144	130	27	133.35	106.375	M90xP1.5	66.7	M60xP2.0	30	29.9	4-M12	3.1
CR60A6	170	145	130	27	133.35	106.375	M90xP1.5	79.6	M74xP2.0	25	29.9	4-M12	3.1
CR65A6	170	135	136	27	133.35	106.375	M95xP1.5	81	M75xP2.0	20	29.9	4-M12	3.1
CR80A8	220	170	156	35	171.45	139.719	M114xP2.0	99	M90xP2.0	27.5	32.4	6-M16	6.1